

(19) World Intellectual Property Organization
International Bureau



(43) International Publication Date
17 December 2009 (17.12.2009)

(10) International Publication Number
WO 2009/150172 A1

(51) International Patent Classification:
G01N 33/66 (2006.01)

ERT, Claude [BE/BE]; Abdijstraat 36, B-9700 Oude-
naarde (BE).

(21) International Application Number:
PCT/EP2009/057162

(74) Common Representative: VIB VZW; Rijvisschestraat
120, B-9052 Gent (BE).

(22) International Filing Date:
10 June 2009 (10.06.2009)

(81) Designated States (unless otherwise indicated, for every
kind of national protection available): AE, AG, AL, AM,
AO, AT, AU, AZ, BA, BB, BG, BH, BR, BW, BY, BZ,
CA, CH, CL, CN, CO, CR, CU, CZ, DE, DK, DM, DO,
DZ, EC, EE, EG, ES, FI, GB, GD, GE, GH, GM, GT,
HN, HR, HU, ID, IL, IN, IS, JP, KE, KG, KM, KN, KP,
KR, KZ, LA, LC, LK, LR, LS, LT, LU, LY, MA, MD,
ME, MG, MK, MN, MW, MX, MY, MZ, NA, NG, NI,
NO, NZ, OM, PE, PG, PH, PL, PT, RO, RS, RU, SC, SD,
SE, SG, SK, SL, SM, ST, SV, SY, TJ, TM, TN, TR, TT,
TZ, UA, UG, US, UZ, VC, VN, ZA, ZM, ZW.

(25) Filing Language: English

(26) Publication Language: English

(30) Priority Data:
08158010.2 11 June 2008 (11.06.2008) EP

(71) Applicants (for all designated States except US): VIB
VZW [BE/BE]; Rijvisschestraat 120, B-9052 Gent (BE).
UNIVERSITEIT GENT [BE/BE]; Sint-Pietersnieuw-
straat 25, B-9000 Gent (BE).

(72) Inventors; and

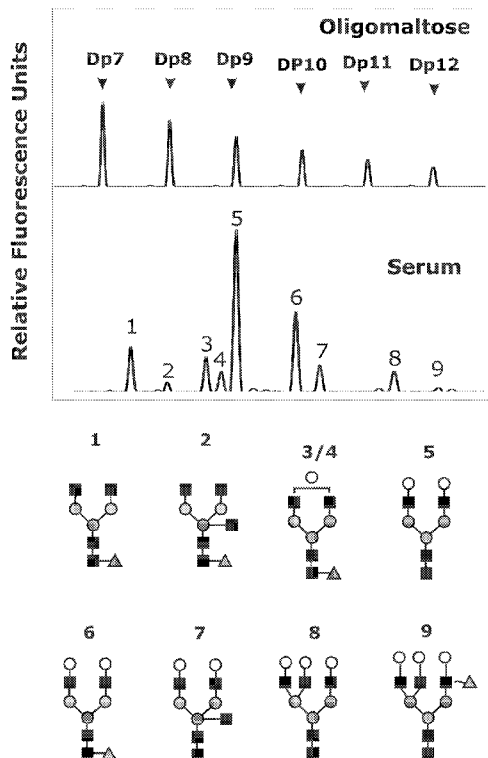
(75) Inventors/Applicants (for US only): CHEN, Cuiying
[BE/BE]; Lijsterstraat 10, B-9860 Balegem (BE). LIB-

(84) Designated States (unless otherwise indicated, for every
kind of regional protection available): ARIPO (BW, GH,
GM, KE, LS, MW, MZ, NA, SD, SL, SZ, TZ, UG, ZM,
ZW), Eurasian (AM, AZ, BY, KG, KZ, MD, RU, TJ,
TM), European (AT, BE, BG, CH, CY, CZ, DE, DK, EE,
ES, FI, FR, GB, GR, HR, HU, IE, IS, IT, LT, LU, LV,

[Continued on next page]

(54) Title: BLOOD SERUM MARKER FOR DETECTION AND DIAGNOSIS OF ALZHEIMER'S DISEASE

Figure 1



(57) Abstract: The present invention relates to a blood marker for
early detection and diagnosis of Alzheimer's disease. More specifi-
cally, it relates to an analysis of the protein glycan profile in the
blood, and the identification of specific peak ratio's when compared
to healthy aged matched subjects that are typical for Alzheimer's de-
mentia.

WO 2009/150172 A1